



Waihi Heritage Vision
New Zealand Tunnelling Company Memorial
Gilmour Lake, Waihi

Waihi Heritage Vision
www.nzetc.co.nz
[www.facebook.com/nztunnelling company](https://www.facebook.com/nztunnellingcompany)

Inga Wahi Katoa (Everywhere).

Waihi Heritage Vision

New Zealand Engineers Tunnelling Company Memorial

Gilmour Lake, Waihi

1. Overview
2. Design Requirements
3. Site Description
4. Project Budget
5. Funding Opportunities
6. Programme
7. Partnerships
8. References and Additional Information
9. Contact Details

Inga Wahi Katoa (Everywhere).

Waihi Heritage Vision

New Zealand Engineers Tunnelling Company Memorial

Gilmour Lake, Waihi

Memorials provide a tangible and immediate focal point for a sense of national identity, as sites for commemoration and remembrance of those who served in times of war, and for the recognition of the relationships New Zealand has forged with other countries through a shared military heritage. The New Zealand Tunnelling Company memorial will highlight our rich mining heritage as well as the contribution of miners to the First World War effort.

1. Overview

The proposed NZETC memorial will provide a place for both individuals and community to meet and commemorate our mining and military heritage. 2014 – 2018 World War One commemorations in New Zealand and overseas provide an opportunity for recognition of the NZETC story, of miners, and the participation of the Hauraki Goldfields enlistments. There is currently no memorial to New Zealand tunnellers in New Zealand. In Arras, France there is a NZETC memorial, but this recognises only those who died while serving in Arras.

1.1 Background

Waihi Heritage Vision, or the 'Heritage Group' as it is more commonly known, is an independent subgroup of Waihi Community Vision, established to identify, research, record and preserve the valuable heritage of Waihi and the surrounding district. The group is an incorporated society and aims to work towards the restoration, preservation and protection of our natural and built heritage in such a way that we can honour the past and at the same time use it to contribute to the cultural and economic future of Waihi.

One of the projects undertaken by the Heritage Group is the 'research and remembrance' of the New Zealand Tunnelling Company of World War One. This Company has particularly strong links to Waihi. Throughout New Zealand, only Auckland had more enlistments in the Company than Waihi. For many decades their story was forgotten. Now, on the eve of centennial celebrations of World War One, the Heritage Group has embarked on a project to bring their story back to life and remind modern-day Waihi and New Zealand of these historical links.

A brief synopsis of project activities to date includes:

2009 Links formed with Arras Tourist Office in France

Tunnelling Company Descendants' gathering held in Waihi

Hosted French PhD student for six weeks while researching NZETC

Featured on Maori Television and Afternoons with Jim Mora on Radio New Zealand

Meeting with New Zealand French Embassy Deputy Head of Mission in Waihi

- 2010 Organised 'Provincial Premiere' of tunnellers' film *Beneath Hill 60*. Executive Producer Ross Thomas flew from Australia to attend
- Mayoral visit to Arras by His Worship the Mayor John Tregidga
- Tunnellers' story featured on Maori Television ANZAC Day
- 2011 Visit to Arras by Newmont Waihi Gold External Affairs manager Sefton Darby
website www.nzetc.co.nz developed
- 2012 Western Front and Arras Pilgrimage by descendants and supporters, including John Davies President Waihi Memorial RSA and Raina Davies as kuia and cultural advisor. Events in France were attended by New Zealand Defence Attaché Brigadier Lofty Hayward and the New Zealand Ambassador to France Rosemary Banks
- Address by Rt. Hon John Key Prime Minister at ANZAC Day service in Wellington was a letter from a Tunneller
- Tunnellers' story featured on TV3 ANZAC Day
- Initial planning for Miners' Reflective Area, Kowhai trees and Tunnelling Company Memorial
- 2013 Continue to liaise with Arras Tourist Office in particular regarding 2017 plans for a Tunnelling Company exhibition.
- Memorial planning continues
- Facebook page www.facebook.com/NZTunnellingCompany set up

1.2 History

In September 1915 the Imperial Government requested that New Zealand raise an Engineers Tunnelling Company of three or four hundred men. They would form one of 25 British and seven Dominion Tunnelling Companies, totalling 25,000 men that would serve in France by late 1916.

Most of the tunnellers were quarrymen, miners and labourers from the Railways and Public Works Departments. The officers were drawn chiefly from the engineering staff of the Public Works Department, with a sprinkling of mining engineers.

The Officers of the NZ Tunnelling Corps wore a large grenade collar badge above a scroll *Inga Wahi Katoa* (Everywhere).

NZETC enlistments were distinct from other WW1 NZEF units and were drawn from throughout NZ. NZETC enlistments also represent mining communities from the mining districts of the United Kingdom, South Africa as well as Australia and NZ.

Many tunnellers came from Waihi, and current investigations show thirteen tunnellers are buried in the Waihi Public Cemetery.

1.3 Objectives of the project

- Commemorate men from Waihi and NZ who served in the NZETC in WW1
- Provide a place for educational learning
- Provide a place for reflection
- Provide a focus for other WW1 commemorative events
- Provide a robust and high quality design
- Provide recognition of the heritage of the site and present and planned urban relationships

2. Design Requirements

2.1. Site Specific

Deliver a high quality, imaginative and cohesive design that enhances existing Waihi heritage and complements World War One memorials in NZ.

Provide a memorial which supports commemoration and remembrance of those, especially miners, who served in time of war and which enhances relationships with places and countries with whom we have a shared military history.

2.2 Size and Scope

The primary design theme is a T shaped 7.5 metre structure designed to integrate with the natural surroundings and seating included in the Miners' Reflection Area. The sculpture is scalable. Secondary design offerings are at 6 metre and 5 metre heights.

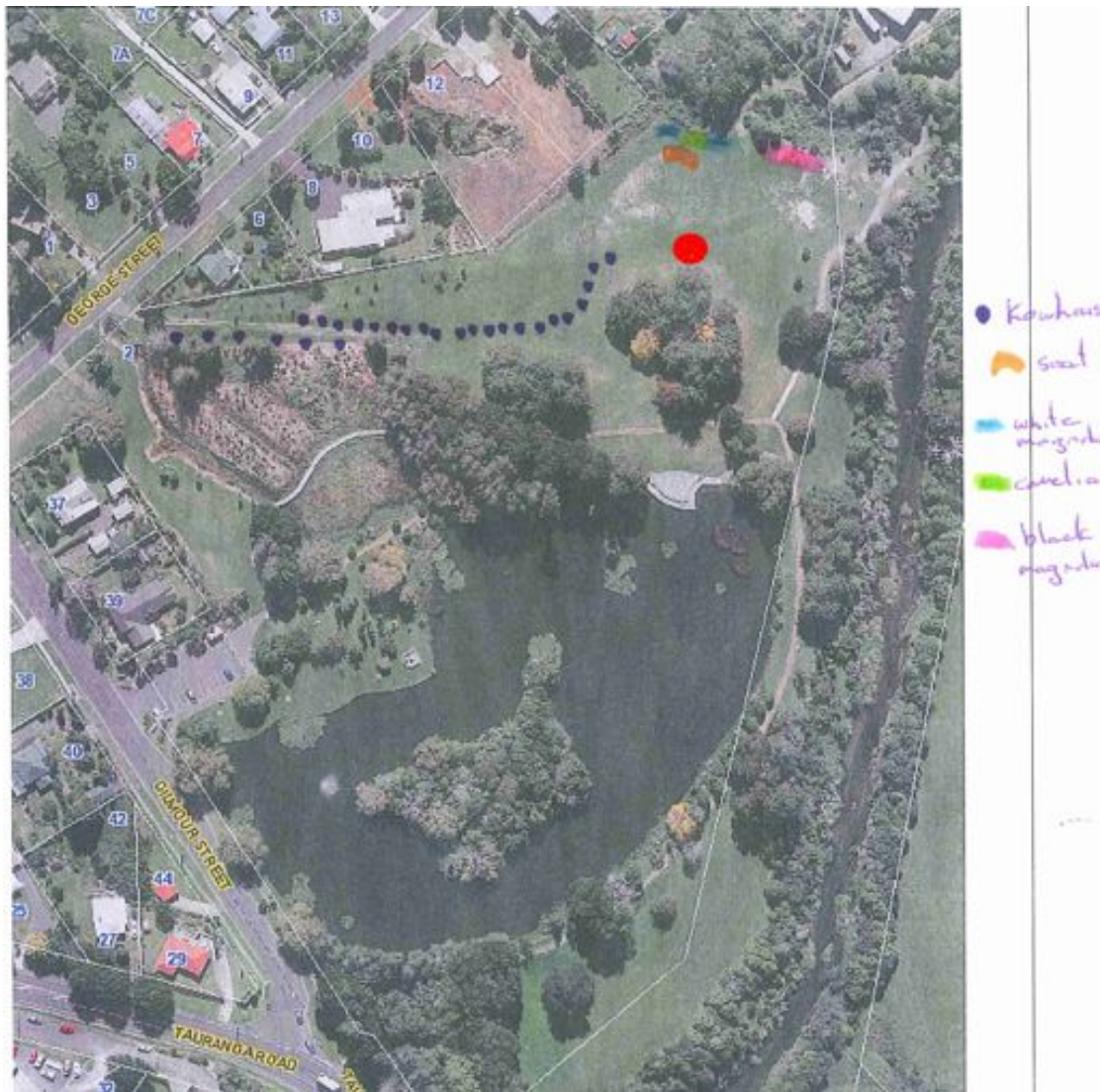
2.3. Materials, Finish and Conservation Management objectives

The design uses quality materials and fixtures designed to suit the location both aesthetically and in terms of durability. Materials, surfaces and finishes have been selected to discourage graffiti and to minimize ongoing cleaning and maintenance costs.

The memorial finish is a graphite spray over etch-primed galvanizing which will have a very natural colour and be slippery to hinder climbing. The graphite is a very persistent finish over galvanizing. This will be further coloured with earth pigments applied to highlight the forms and give warm earth tones like the natural stone to be used around the platform.

Local stone, quartz and materials will be used wherever possible with the exception of stone which may be specifically supplied from other areas to symbolise enlistments from places throughout NZ.

3. Site Description



3.1 The NZETC memorial is sited in the Miners' Reflection Area at Gilmour Lake. The memorial size and dimensions reflect the adjacent trees. While the proposed memorial is tall like a tree it is not imposing. Gilmour Lake, Black Hill and Union Hill form backdrops. A decked area with power access next to the pond lies within a short distance. Existing pathways and seating are close by.

3.2 The memorial provides a natural extension of the facilities offered in Waihi and those being developed in and around Gilmour Lake. Heritage walks around town and Union Hill, walks around Black Hill, the cemetery interpretive plaque project all combine naturally with this proposal. In addition the memorial is sited near the path of an early rake line.

3.3 Topography

The memorial will be situated on a slight rise next to a grove of trees (see cover photo). It is within the site lines of the George Street entrance. It commands a view over the Miners' Reflective Area. When approaching from the main Gilmour Lake entrance, the pathway borders the trees behind which the memorial is revealed. The memorial height complements Union Hill and Black Hill which provide a background.

3.4 Trees and Vegetation

The wider Miners' Reflective Area will have a planting of 29 Kowhai trees to signify the miners who lost their lives at Pike River Mine. These trees were donated by Te Whanagai Trust. They are to be planted 6 metres apart along the pathway.

White Camellias will be planted to provide a windbreak for the seat at the Reflective Area while a number of other red and white magnolias will provide colour and reflect themes of peace and war.

Later flowering daffodils are to be planted around the large trees in the vicinity of the Kowhai avenue.

Another Miners' Reflective Area natural feature is the rocky outcrop which is sited behind the proposed memorial seating. Developing sympathetic planting and modifying the current drain area here will enhance the natural rock feature and memorial theme.

3.5 Ground Surface

The memorial will be anchored into concrete foundations. A variety of finishing possibilities is currently being considered.

3.6 Lighting

No lighting has been planned for, but there is a nearby power source which would allow this at a future time.

3.7 Accessibility

This is a key issue, as the needs of a wide range of visitors must be taken into account. There is room to develop a pathway to the memorial and the incline can be adapted for this. Access to the area is wheelchair-friendly.

3.8 Multiple uses of the area

The Tunnelling Company Memorial should provide a focus and help draw the different design elements of the miner's memorial seating and Pike River kowhai together to make a cohesive area for reflection and passive activities. The proposed site is on a slight rise with key visual lines of sight connecting it to both the Miners'

Reflection Area and walkway around the lake and Union Hill walkways which are currently being extended and developed.

4. Project Budget

4.1 The work is budgeted in phases. The work can be rebudgeted at different scales.

Items:

4.1.1 The primary feature of the NZETC memorial is a natural basalt pavement similar to that in the Karangahake Gorge, or Giants Causeway, out of which two columns rise to a globe element and cross bar. Above these are two arms rising to open, gesturing hand-like forms. This feature at 7.5 metres will cost \$124,160.00

Additional features may be added:

4.1.2 Seating: \$ 2500 each.

4.1.3 Figures: life size \$7000 and up each.

4.1.4 Mosaic in the base paving showing signs and inscriptions. \$TBD

4.1.5 Mosaic detailing on globe element \$TBD

4.1.6 Interpretive Signs: \$TBD

4.1.7 Crazy pavement of stone from around New Zealand. \$TBD

5. Funding opportunities

5.1 A range of national and regional funding opportunities will be investigated and pursued. Government funding for First World War Centenary commemorative activities is available via the Lottery Grants Board. Funding is available for the construction of new memorials. The next funding round closes on 29 May 2013. We also anticipate in-kind assistance from a range of sources.

6. Programme

6.1 Mid April 2013 Fund raising commences. Funding application to Lottery Grants Board.

6.2 March 9 2016 Completion date and Tunnelling Company memorial unveiling. This will mark the centennial anniversary of the arrival on the Western Front of the NZETC who were the first members of the NZEF to arrive on the Western Front.

7. Partnerships

7.1 Collaboration, communication and sharing knowledge across sectors, professions and communities is important. NZETC Facebook is already drawing together a number of interest groups and peoples from around the world. Over the past several years WHV/NZETC relationships have been developed with other mining areas and their museums i.e. Huntly, Thames, Greymouth, while NZETC presentations have been made to mining industry and mining and military heritage groups like AUSIMM, Australian Mining History Association and NZ Military Historical Society. Relationships have been developed with the NZDF and indications are that the NZ Engineers unit would appreciate an opportunity to be part of the project. A sound ongoing relationship has been build with the Arras Tourist office. The president of the Waihi RSA went on the 2012 trip to Arras and ongoing support from the RNZRSA as well as support from the Minister of Defence has been provided.

As many areas as possible with known links with the Tunnelling Company will be informed of the memorial and invited to participate. This could be monetary or providing material i.e. rock from areas of New Zealand where Tunnelling Company enlistments originated to be used in the memorial area to represent the men from the area.

7.2 New Zealand

World War One Commemorations

The First World War Centenary Programme Office, based in Manatū Taonga, the Ministry for Culture and Heritage, is responsible for co-ordinating New Zealand's response to the First World War Centenary, working with others in New Zealand and overseas. The Programme Office is supported by the Ministry of Foreign Affairs and Trade, the New Zealand Defence Force and the Department of Internal Affairs.

<http://ww100.govt.nz/activities-and-projects>

WW100 projects are highlighted on their website and we have been invited to provide information about the NZETC and the memorial project.

7.3 The memorial has the opportunity to involve communities overseas.

7.3.1 Australia. We share strong links with Australia. A number of men from this country are known to have served in the NZETC. We have men born in Australia who served in the NZETC and who are buried at Waihi Cemetery.

7.3.2 Arras. The Arras Tourism Office has provided support since 2009 for WHV projects. This has included an official mayoral reception and hosting of the HDC Mayor as well as descendants and others. The French Embassy in Wellington is aware of the WHV/NZETC project and has provided assistance in the past. The NZ French Embassy Deputy Head of Mission met with our group in Waihi in 2009.

7.3.3 Falmouth, Cornwall. WHV/NZETC has been in touch with the Falmouth Council and has been offered assistance with research. This relationship needs developing. Strengthening our Cornwall links both in regard to the NZETC and our shared mining heritage in general would be useful for a range of Hauraki heritage projects.

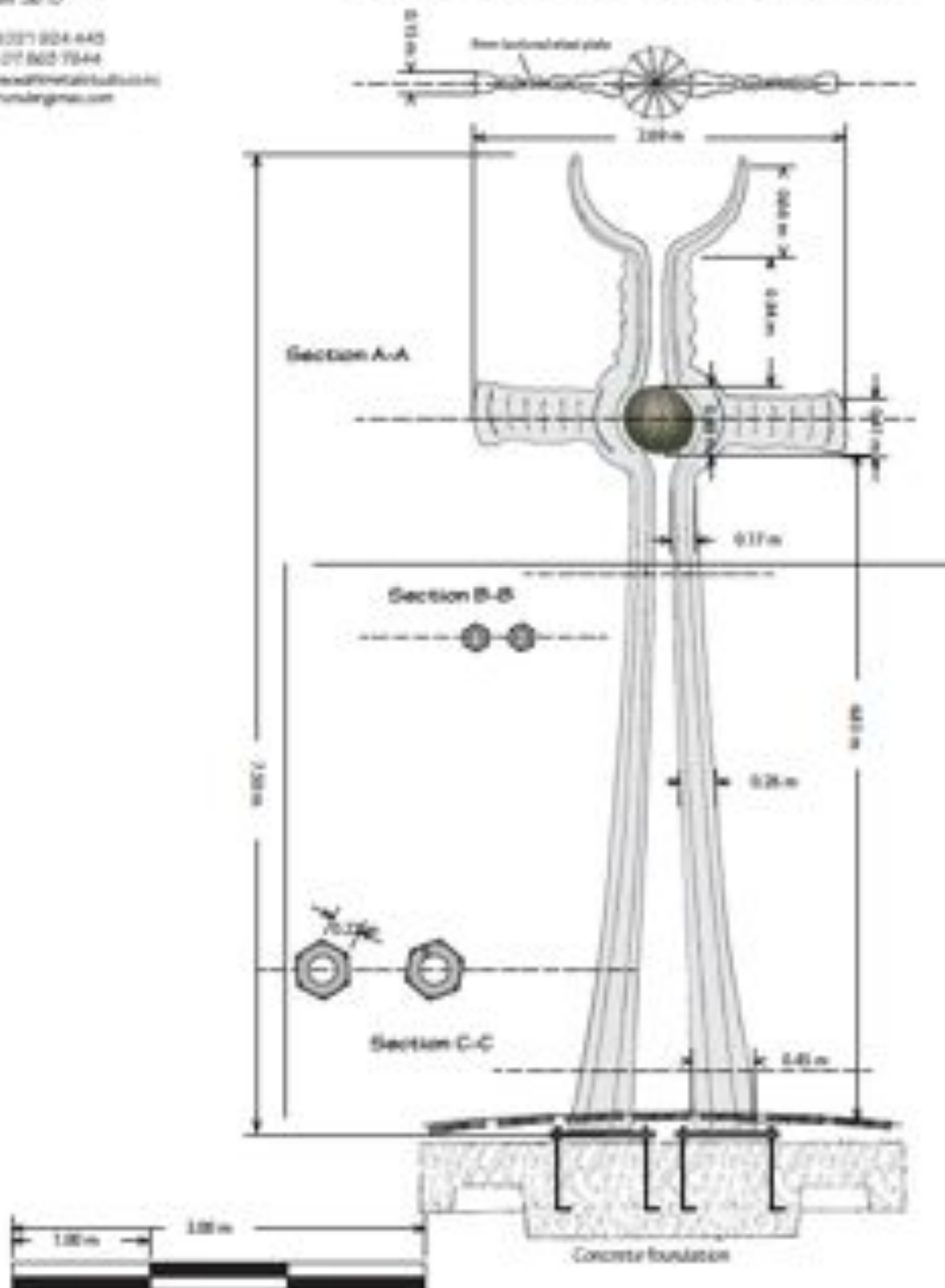
8. References and additional information

8.1 Proposed memorial elevation and detail

Wahne Metal Studio Ltd
55 Kildare Street
Wahne 2010

+61 2 9271 924 442
+61 2 9271 862 7944
www.wahnemetalstudio.com
info@wahne.com

proposed NZETC memorial 3-3-2015



8.2 New Zealand

8.2.1 New Zealand Government WW1 Commemorations <http://ww100.govt.nz/>

8.2.2 Other recent mining memorials

On the 46th anniversary of the Strongman Mine disaster 19 January 2013, government ministers, next of kin and descendants gathered on the Greymouth floodwall for the unveiling of a memorial to the 427 men who have lost their lives in coalmining accidents on the West Coast over the past 145 years, including Pike River. The memorial was reported to have cost \$250,000.



8.2.3 Work has been started towards developing a Miners' Memorial Centre in Greymouth which is expected to cost approximately \$5.5 million

8.3 Tunnellers Memorials/plaques

8.3.1 Australia. In 2012 a plaque was unveiled in honour of the Australian Tunnelling Company at the Army Museum of North Queensland. A Tunnellers display is currently being planned within the Museum to depict the 'Life of a Tunneller' during World War One. There is currently no Australian memorial to the Tunnellers either in Australia or on the Western Front. We would expect to have Australian representation at the unveiling of the NZETC memorial, descendants as well as a military presence.



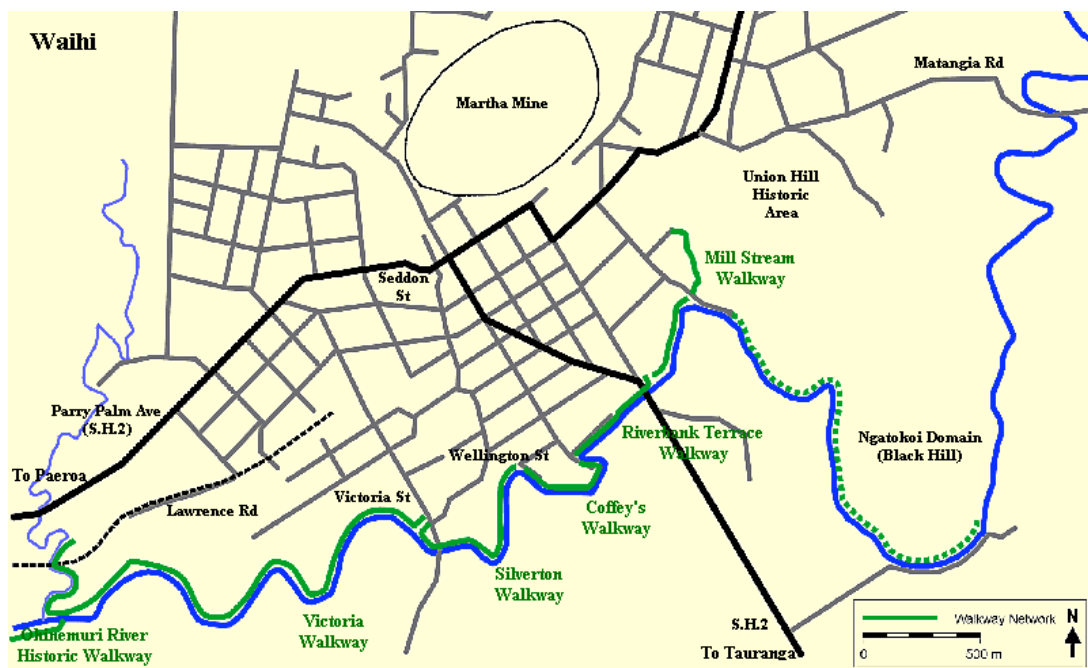
8.3.2 Givenchy. The Givenchy Tunnellers Memorial in France unveiled in June 2010 commemorates the endeavours of the men from the Tunnelling Companies of Britain, Canada, Australia and New Zealand.



8.3.3 Arras NZETC memorial. A memorial to the New Zealand tunnellers who lost their lives while serving in the Arras area was unveiled at Arras on 8 April 2007. An underground museum, Carrière Wellington, which incorporates parts of the tunnel system, was opened on 15 February 2008.



8.4 Links with existing walkways



<http://www.waihiwalkways.org.nz/map.htm>

8.5 John Key speech, ANZAC Day 2012 *5 mins*

<http://www.youtube.com/watch?v=5CxsjYnsjB8&list=UU8MTeC4W1ZuuOPx8Kw-QOEQ&index=2>

8.6 New Zealand Tunnelling Company (Maori Television) 2010 *4 mins*

<http://www.youtube.com/watch?v=kYQokpYNeXs&list=UU8MTeC4W1ZuuOPx8Kw-QOEQ>

8.7 New Zealand Tunnelling Company (TV3) 2012 *3 mins*

<http://www.youtube.com/watch?v=usFa3swlil4&list=UU8MTeC4W1ZuuOPx8Kw-QOEQ>

8.8 Pilgrimage to Arras (descendants' and supporters' trip to Arras 2012) *6 mins*

<http://www.youtube.com/watch?v=625LklahelA>

8.9 Pike River Tribute from Waihi *5 mins*

http://www.youtube.com/watch?v=h_fmWszavMI&list=UU8MTeC4W1ZuuOPx8Kw-QOEQ

9. Contact details

Waihi Heritage Vision Researcher & Project Coordinator

Sue Baker Wilson

Phone: 07 549 0496

Email: 2017@nzetc.co.nz

Web: www.nzetc.co.nz

Facebook: www.facebook.com/NZTunnellingCompany

Project Design and Construction

Waihi Metal Studio

Nicholas Brumder

Phone: 07 863 7844

Mobile: 021 924 443

Email: nbrumder@imac.com

Web: www.waihimetalstudio.co.nz

Waihi Heritage Vision Chairperson

Kit Wilson

Mobile: 027 451 3407

Email: kit@katikati.co.nz or Kit.Wilson@Newmont.com